

Biodiversity

Otsuka Group's Biodiversity Policy

Basic Approach

The Otsuka Group recognizes that biodiversity is an indispensable natural capital for all business activities. As a member of a society that benefits from nature, we will take into consideration the impact of our business activities on biodiversity and work to conserve and restore biodiversity towards realizing a sustainable society that passes rich nature to future generations.

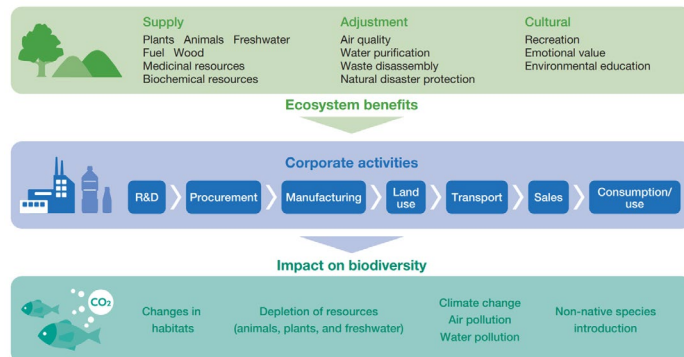
Guidelines

1. We will clarify the relationship between biodiversity and business activities throughout the value chain and promote the conservation and sustainable use of biological resources.
2. We will promote the development of biodiversity considerate products and technologies and strive to reduce the impact on nature.
3. We will respect international agreements on biodiversity and comply with treaties and laws and ensure the proper access and use of genetic resources, as well as the fair and equitable distribution of the benefits accruing therefrom.
4. We will communicate with various stakeholders such as administrative agencies, local residents, and NGOs, and collaborate with local communities, to conserve and restore biodiversity.
5. We will strive to promote conservation activities by raising awareness about the relationship between our business activities and biodiversity.

(Revised in April 2024)

Relationship between Biodiversity and Business Activities

Otsuka group recognize that biodiversity is one of the indispensable natural capital for all business activities. We strive to conserve and restore it towards realizing a sustainable society and vibrant nature for the next generations as a member who benefit from nature.



Business Operations Considerate of Local Ecosystems

Initiatives for Nature Conservation

The Otsuka group is committed to conserving animals and plants in accordance with laws and regulations, as well as protecting the natural environment in local communities. We have introduced annual environmental surveys to our domestic and global operating companies with production sites, and we monitor compliance with laws and regulations regarding protected animals and plants that are defined by laws (e.g., IUCN protected area management categories, the Ramsar Convention, domestic laws and regulations), and conservation activities. In addition, the Otsuka group has revised our biodiversity policy and guidelines this year to assess our dependency and the environmental impact of our business activities. We plan to disclose information on governance, strategy, risk management, and targets and indicators in line with the Taskforce on Nature-related Financial Disclosures (TNFD). We will continue striving to recognize ecological risks in the regions surrounding our factory, and tackle them.

Creating Biotopes*

The Otsuka group created biotopes at the Tokushima Itano Factory of Otsuka Pharmaceutical and Okayama Taiho Pharmaceutical. By reusing the cooling water from the factories and drain them into channels that reproduce natural environments. Seasonal flowers bloom, and insects and wild birds fly around biotopes which achieve the living in harmony in nature.

*Restoring ecosystems that have been lost due to the establishment of factories, and creating an environment which the original animals and plants can return and thrive.

Wildlife in the Tokushima Itano Factory of Otsuka Pharmaceutical



Tokushima Itano Factory of Otsuka Pharmaceutical



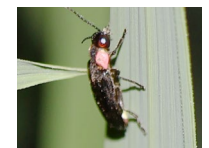
Black-spotted pond frog (Tokushima Prefecture Red List: Endangered)



Ferocious water bug (Tokushima Prefecture Red List: Critically Endangered)



Golden venus chub (Tokushima Prefecture Red List: Critically Endangered)



Japanese Heike firefly