

Material Issues												
TABLE OF CONTENTS	Editorial Policy	Corporate Profile	Message from the Director in Charge	Policy and Management	Carbon Neutrality	Circular Economy	Water Neutrality	<b>Biodiversity</b>	Management of Chemical Substances	Supply Chains	Engagement	Environmental Data and Third-Party Verification

# Biodiversity

## Otsuka Group's Biodiversity Policy

### Basic Approach

The Otsuka group recognizes the invaluable benefits provided by the global environment, and thus deeply values the wonder of life. It understands that nature's gifts are the key to our future, and is consequently committed to protecting biodiversity worldwide.

### Guidelines

1. The group will deepen its understanding of the relationship between business activities and biodiversity.
2. The group will strive to reduce the environmental impact of business activities that impact biodiversity.
3. The group will strive for sustainable use of resources (including ecosystem services), and for fair and equitable distribution of genetic resources in accordance with international arrangements.
4. The group will work on conservation of biodiversity by communicating, cooperating and collaborating with stakeholders worldwide.
5. The group will help foster public awareness of biodiversity.

## Business Activities That Take Local Ecosystems into Account

### Initiatives for Nature Conservation

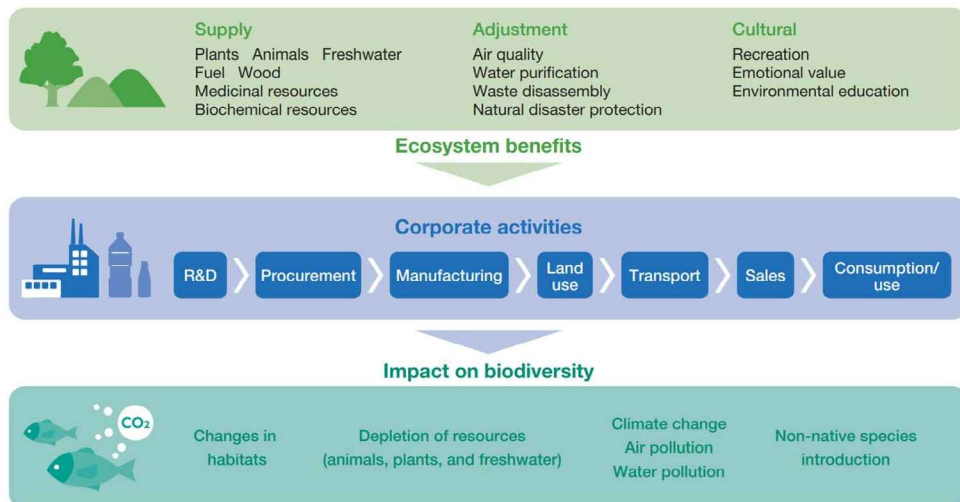
The Otsuka group is committed to conserving animals and plants based on laws and regulations, as well as protecting the natural environment rooted in local communities. We have been annually conducting our environmental survey to operating companies in Japan and overseas that have production sites, to monitor the status of compliance with laws and regulations on animals and plants to be protected that are defined by laws and others (IUCN protected area management categories, the Ramsar Convention, domestic laws and regulations) and conservation activities for them. We will continue to grasp ecological risks in the areas surrounding our plants, and take measures against them.

### Creating Biotopes\*1

The Otsuka group created biotopes at the Tokushima Itano Factory of Otsuka Pharmaceutical and at a factory of Okayama Taiho Pharmaceutical. By reusing the cooling water, etc., from the factories, the water is discharged into ditches that reproduce the natural environment. Seasonal flowers bloom around the water, and insects and wild birds also fly in, creating a symbiosis with nature.

\*1 Restoring ecosystems that have been lost due to the establishment of factories, etc., and creating an environment for plants and animals that originally lived in the area can return.

## Relationship between Biodiversity and Business Activities



## Wild birds and insects flying in to the Tokushima Itano Factory of Otsuka Pharmaceutical



Black-spotted pond frog (Endangered)



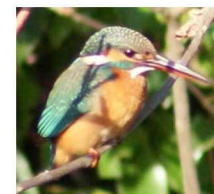
Giant water bug (Critically Endangered)



Golden venus chub (Critically Endangered) (from the Tokushima Red List)



Japanese Heike firefly



Kingfisher

